

# NOTICE AND NOTE NONFICTION

## Signposts & Big ?s

SIGNPOSTS & BIG QUESTIONS FROM KYLENE BEERS & ROBERT PROBST'S BOOK *READING NONFICTION*

Multiple options for hanging these signpost anchor charts that feature the questions that go with each **NONFICTION** signpost. Also included is an anchor chart for each of the nonfiction big questions.

**WHAT SURPRISED ME?**

- I WAS SHOCKED ABOUT ...
- I WAS SURPRISED WHEN ...
- I NEVER THOUGHT ABOUT ...
- I COULD NOT BELIEVE ...
- REALLY?

**WHAT DID THE AUTHOR THINK I ALREADY KNEW?**

- I DID NOT KNOW ...
- I WAS CONFUSED BY ...
- THE AUTHOR ASSUMED ...
- THE AUTHOR THOUGHT I KNEW ...

**WHAT CHALLENGED, CHANGED, OR CONFIRMED WHAT I KNEW?**

- AT FIRST I THOUGHT, BUT ...
- I HAD TO RETHINK ...
- I WAS RIGHT/WRONG ABOUT ...
- MY UNDERSTANDING CHANGED WHEN ...

**CONTRASTS & CONTRADICTIONS**

When something contradicts what you know or think OR Shows other sharp contrasts

**WHAT DOES THIS MAKE ME WONDER?**

**ABSOLUTE & EXTREME LANGUAGE**

A statements that allows for no interpretation or that seems unreasonable

**WHY DID THE AUTHOR USE THIS LANGUAGE?**

**NUMBERS & STATS**

When the author uses specific numbers or statistical information

**WHY DID THE AUTHOR USE THESE NUMBERS?**

**QUOTED WORDS**

When the author chooses to quote someone

**WHY WAS THIS PERSON QUOTED & WHAT DID THE QUOTE ADD?**

**WORD GAP**

When the author uses a word or phrase you don't know

**IS THIS WORD ONLY USED IN THIS TOPIC? ARE THERE CLUES TO HELP ME FIGURE IT OUT?**

A statements that allows for no interpretation or that seems unreasonable

**WHY DID THE AUTHOR USE THIS LANGUAGE?**

When the author chooses to quote someone

**WHY WAS THIS PERSON QUOTED & WHAT DID THE QUOTE ADD?**

**vavoom** {classroom}

Dedicated to **simplifying** life for busy teachers!

**CONTRASTS & CONTRADICTIONS**

**ABSOLUTE & EXTREME LANGUAGE**

**NUMBERS & STATS**

**QUOTED WORDS**

**WORD GAP**

When something contradicts what you know or think OR Shows other sharp contrasts

**WHAT DOES THIS MAKE ME WONDER?**

When the author uses specific numbers or statistical information

**WHY DID THE AUTHOR USE THESE NUMBERS?**

When the author uses a word or phrase you don't know

**IS THIS WORD ONLY USED IN THIS TOPIC? ARE THERE CLUES TO HELP ME FIGURE IT OUT?**

SAMPLE POSSIBLE LAYOUT

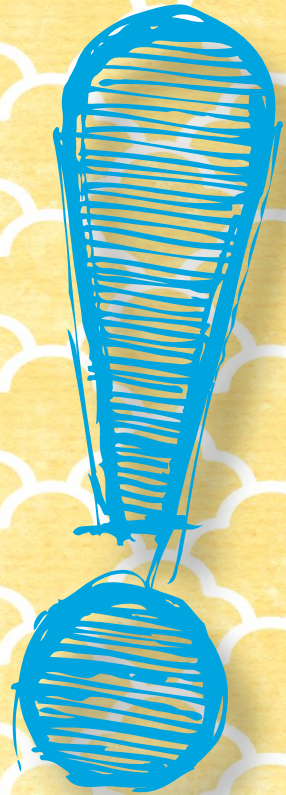
SAMPLE POSSIBLE LAYOUT

**NOTICE AND NOTE**  
**NONFICTION**  
Signposts

**NOTICE AND NOTE**  
**NONFICTION**  
Signposts & Big Questions



# **WHAT SURPRISED ME?**



- **I WAS SHOCKED ABOUT ...**
- **I WAS SURPRISED WHEN ...**
- **I NEVER THOUGHT ABOUT ...**
- **I COULD NOT BELIEVE ...**
- **REALLY?**



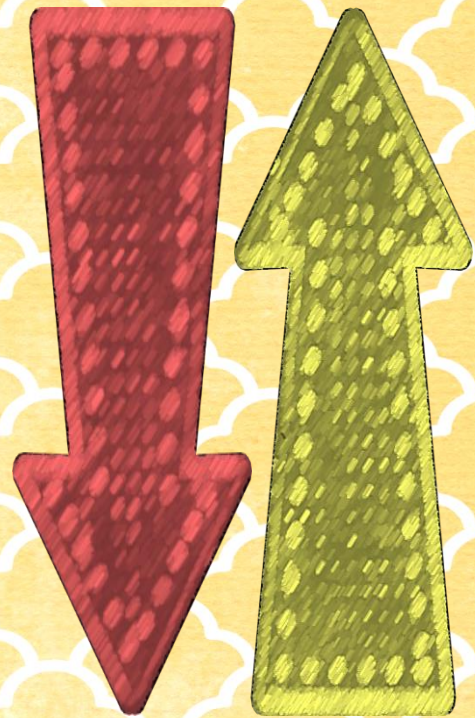
# **WHAT DID THE AUTHOR THINK I ALREADY KNEW?**



- **I DID NOT KNOW ...**
- **I WAS CONFUSED BY ...**
- **THE AUTHOR ASSUMED ...**
- **THE AUTHOR THOUGHT I  
KNEW...**



# **WHAT CHALLENGED, CHANGED, OR CONFIRMED WHAT I KNEW?**



- **AT FIRST I THOUGHT, BUT ...**
- **I HAD TO RETHINK ...**
- **I WAS RIGHT/WRONG ABOUT ...**
- **MY UNDERSTANDING CHANGED WHEN ...**





**CONTRASTS &  
CONTRADICTIONS**

**CONTRASTS &  
CONTRADICTIONS**

*When something contradicts  
what you know or think OR  
Shows other sharp contrasts*

**WHAT DOES  
THIS MAKE  
ME WONDER?**





**ABSOLUTE &  
EXTREME LANGUAGE**





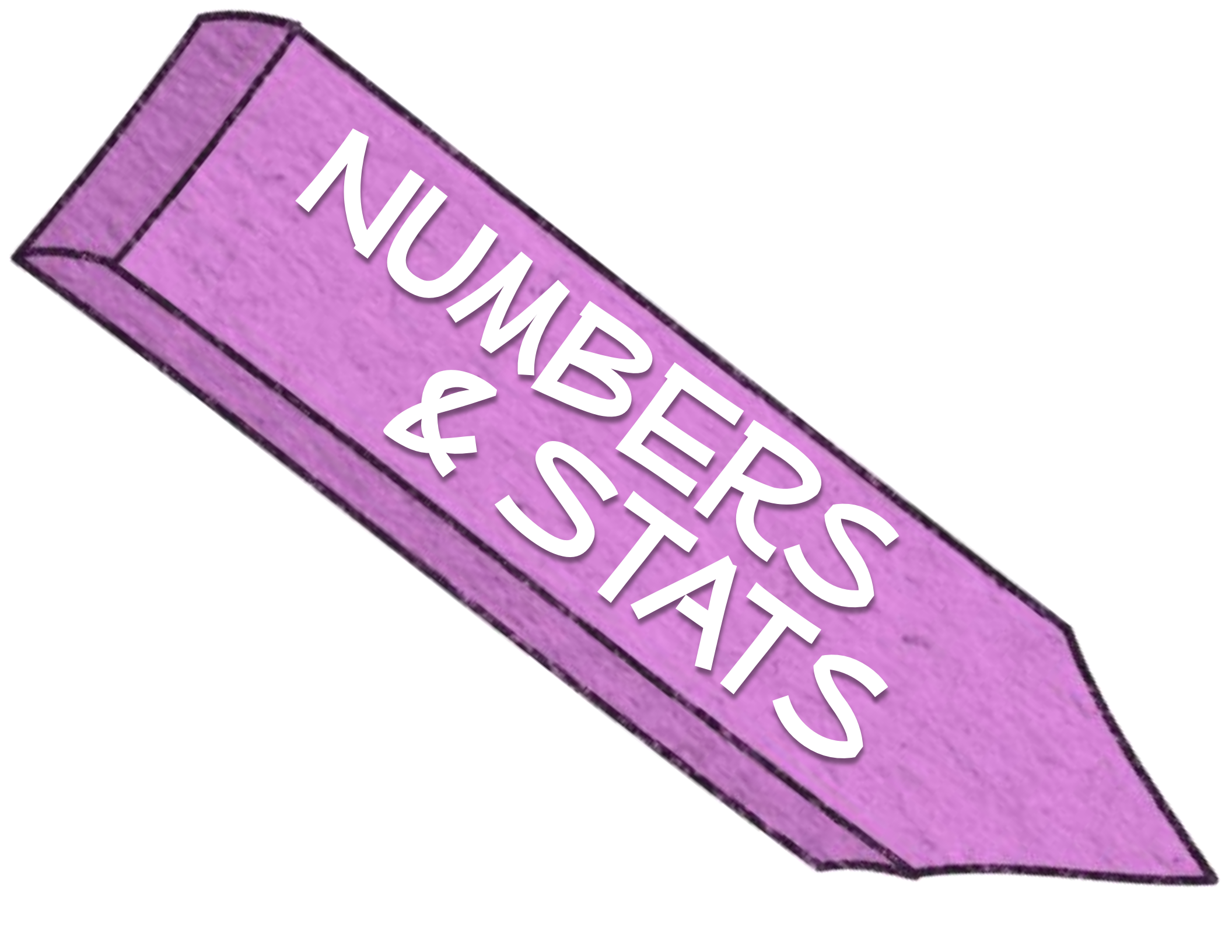
**ABSOLUTE &  
EXTREME LANGUAGE**



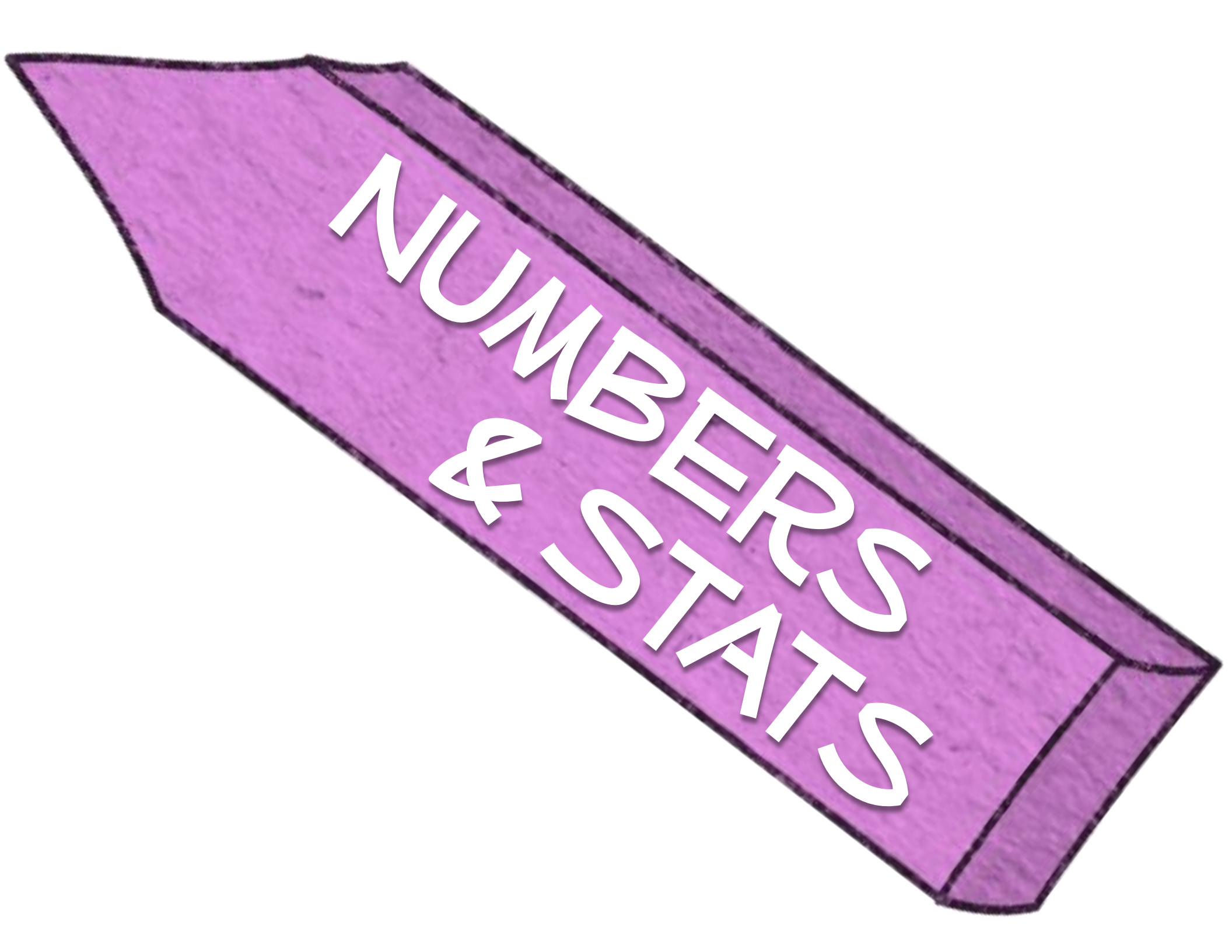
*A statements that allows  
for no interpretation or  
that seems unreasonable*

**WHY DID THE  
AUTHOR USE  
THIS LANGUAGE?**





NUMBERS  
& BEER  
STARTS

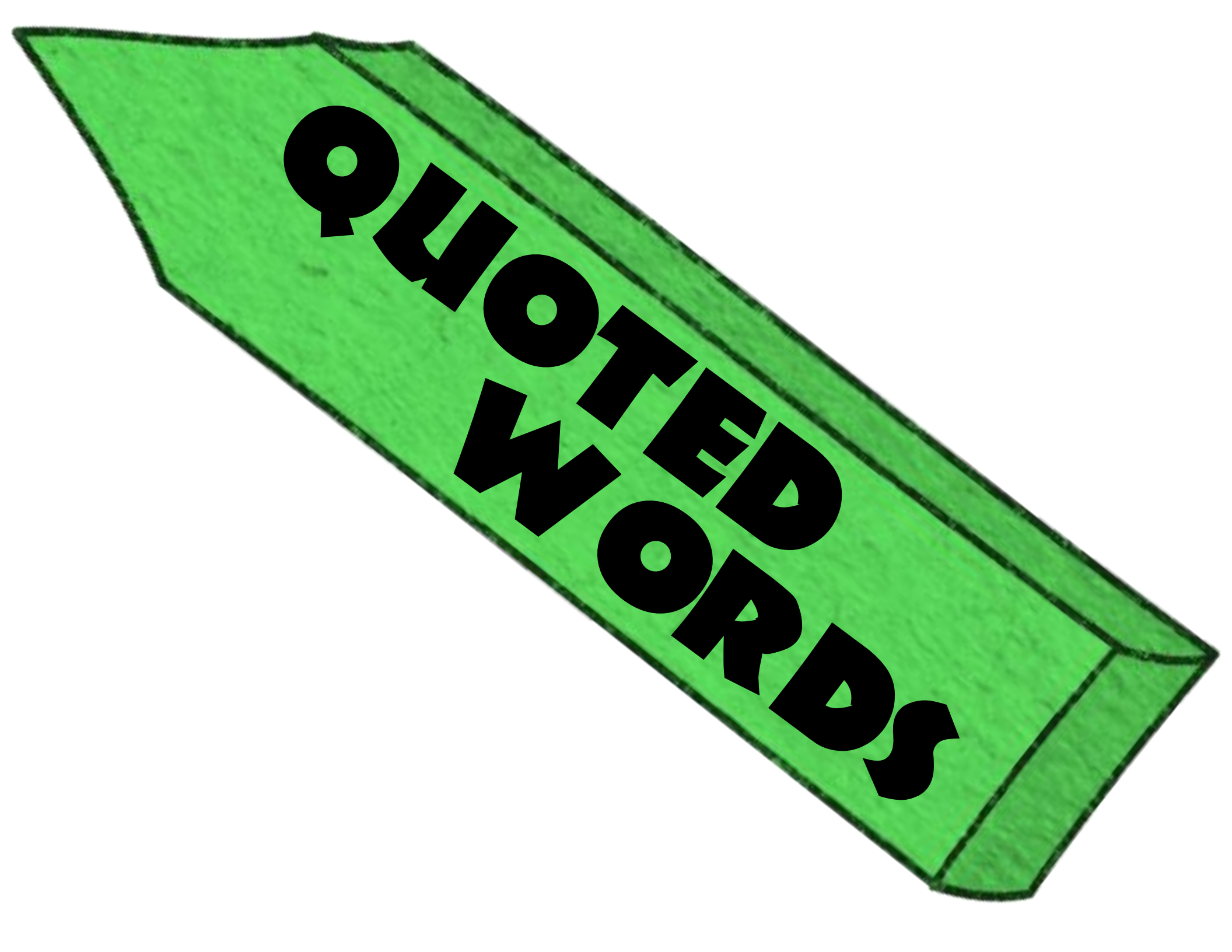
A purple pencil is shown at an angle, pointing towards the top-left. The text "NUMBERS & STATS" is written in white, bold, uppercase letters along the length of the pencil. The pencil has a dark purple outline and a lighter purple fill with a subtle texture.

NUMBERS  
& STATS



*When the author uses  
specific numbers or  
statistical information*

**WHY DID THE  
AUTHOR USE  
THESE NUMBERS?**



**QUOTED WORDS**





**QUOTED  
WORDS**

*When the author chooses  
to quote someone*

**WHY WAS THIS  
PERSON QUOTED  
& WHAT DID THE  
QUOTE ADD?**



**WORD GAP**



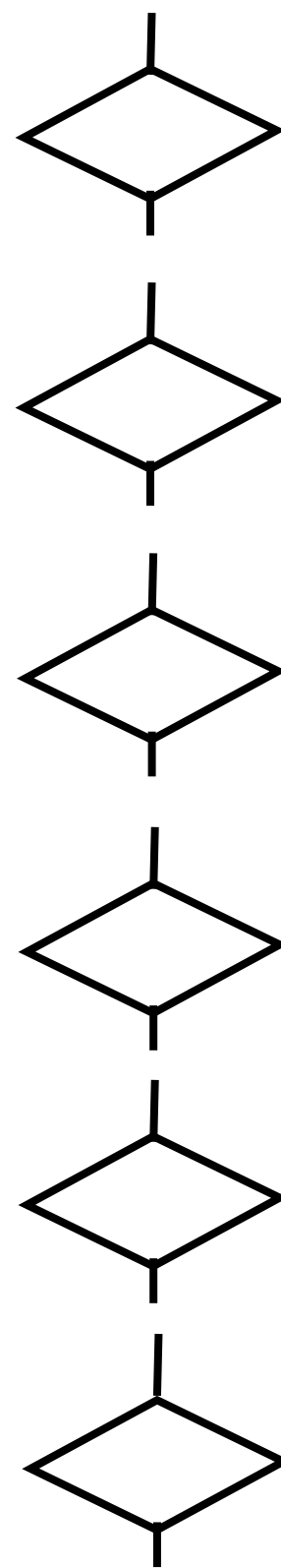
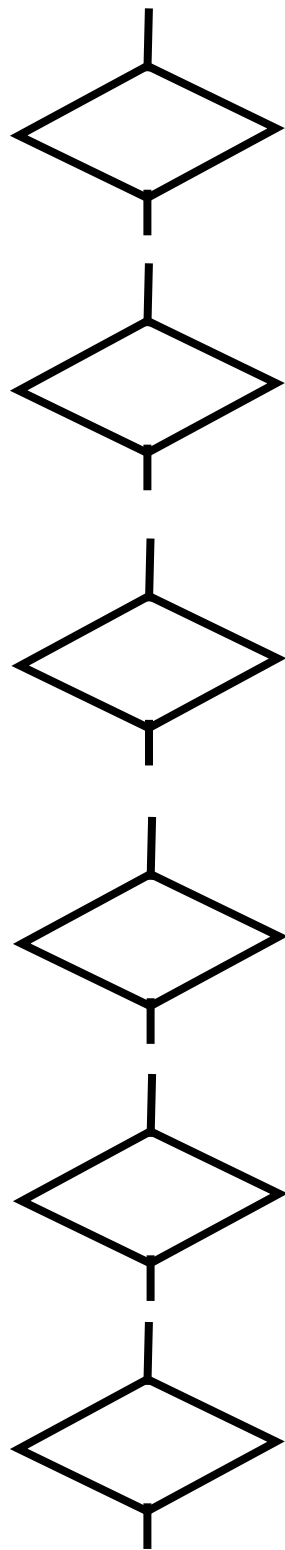
**WORD GAP**



*When the author uses a word  
or phrase you don't know*

**IS THIS WORD ONLY  
USED IN THIS TOPIC?**

**ARE THERE CLUES  
TO HELP ME  
FIGURE IT OUT?**







# THANK YOU

## Fonts Used:

AKADYLAN PLAIN

HUXTABLE

DID YOU SEE THAT

MUFFERAW

BD CRTOON SHOUT

JUNGLEFEVER

CARTON SIX

OBELIXPRO

BOOKWORM



**SAMPLE POSSIBLE LAYOUT**



**CONTRASTS & CONTRADICTIONS**

*When something contradicts what you know or think OR Shows other sharp contrasts*

**WHAT DOES THIS MAKE ME WONDER?**

*A statements that allows for no interpretation or that seems unreasonable*

**WHY DID THE AUTHOR USE THIS LANGUAGE?**

**ABSOLUTE & EXTREME LANGUAGE**

*When the author uses specific numbers or statistical information*

**WHY DID THE AUTHOR USE THESE NUMBERS?**

**NUMBERS & STATS**

*When the author chooses to quote someone*

**WHY WAS THIS PERSON QUOTED & WHAT DID THE QUOTE ADD?**

**QUOTED WORDS**

*When the author uses a word or phrase you don't know*

**IS THIS WORD ONLY USED IN THIS TOPIC?  
ARE THERE CLUES TO HELP ME FIGURE IT OUT?**

**WORD GAP**

**Vdvoom** {classroom}

Dedicated to **simplifying** life for busy teachers!

**SAMPLE POSSIBLE LAYOUT**

## CONTRASTS & CONTRADICTIONS

*When something contradicts what you know or think OR Shows other sharp contrasts*

**WHAT DOES THIS MAKE ME WONDER?**

## ABSOLUTE & EXTREME LANGUAGE

*A statements that allows for no interpretation or that seems unreasonable*

**WHY DID THE AUTHOR USE THIS LANGUAGE?**

## NUMBERS & STATS

*When the author uses specific numbers or statistical information*

**WHY DID THE AUTHOR USE THESE NUMBERS?**

## QUOTED WORDS

*When the author chooses to quote someone*

**WHY WAS THIS PERSON QUOTED & WHAT DID THE QUOTE ADD?**

## WORD GAP

*When the author uses a word or phrase you don't know*

**IS THIS WORD ONLY USED IN THIS TOPIC?  
ARE THERE CLUES TO HELP ME FIGURE IT OUT?**